

A man with a beard and glasses, wearing a grey long-sleeved shirt, a dark navy blue safety vest with multiple pockets, and light-colored work gloves, stands in front of a large, rusted piece of heavy machinery. The background shows various mechanical parts, including what looks like a large wheel or drum and some red and yellow lights.

bolle
SAFETY

EXCELLENCE PROGRAMME
PRESCRIPTION SAFETY GLASS RANGE

INNOVATIVE VISION

EXCELLENCE PROGRAMME ★ **BY BOLLÉ SAFETY**

The technical performances of our safety spectacles goes beyond standards and gives your employees' eyes increased safety. The comfort and design of our lenses and frames combine to ensure employees want to wear them.

In addition to the the safety our products guarantee, we support you in the choice of protection for each employee.

Which standard? What material? What colour?

This guide will help you determine the essential product for everyone.

With effective and desirable protection and a simplified ordering procedure combined with support from opticians, Bollé Safety is a strategic choice to implement your policy with peace of mind.

CONTENTS

DID YOU KNOW? p. 4

MARKINGS AND STANDARDS p. 6

MATERIALS p. 8

COATINGS p. 9

TINTS AND FILTERS p. 10

NEW COLLECTION p. 11

OUR COLLECTION

- New products p. 13
- Must haves p. 16
- Covering p. 21
- Hybrids p. 22
- Wraparound p. 24
- Metal p. 27
- Office specials p. 29

BLUE LIGHT p. 30

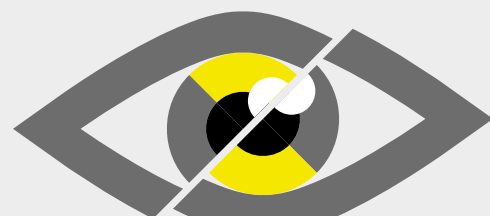
THE BLUE BLOCKER PRODUCT LINE p. 31

**WHY PREFER BOLLÉ SAFETY TO PROTECT
AND CORRECT YOUR EMPLOYEES' EYESIGHT?** p. 32

THE KEY STEPS TO ORDERING p. 33

IN THE BLINK OF AN EYE p. 34

REMARKABLE KEY FIGURES

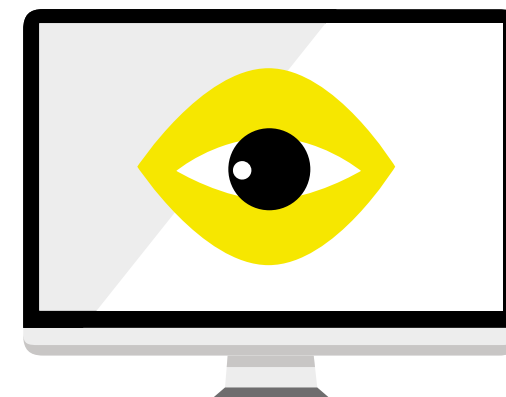


800 000

**NUMBER OF WORK-RELATED
EYE INJURIES EACH YEAR**



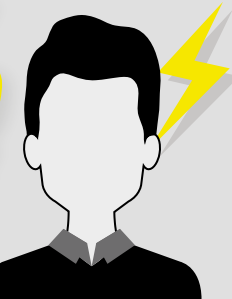
50% OF THE WORLD
POPULATION OVER 20
HAS VISION PROBLEMS



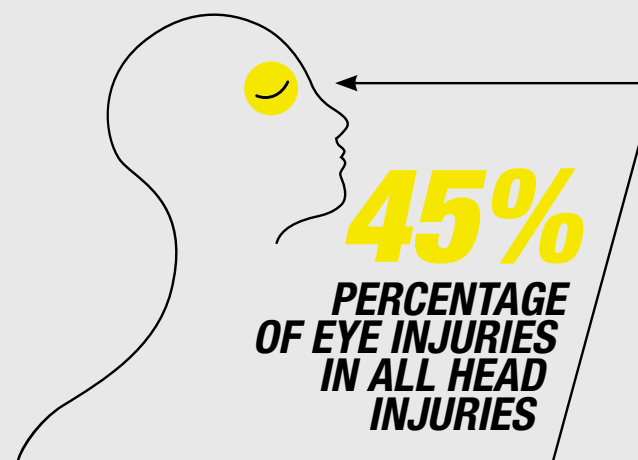
**EYESTRAIN IS THE FIRST COMPLAINT
OF COMPUTER WORKERS**

90%

**OF EMPLOYEES SAY
HEADACHES AFFECT
THEIR WORK
PERFORMANCE**



**ONLY 1/3
TELL THEIR
EMPLOYERS**



45%
PERCENTAGE
OF EYE INJURIES
IN ALL HEAD
INJURIES



50%
OF EMPLOYEES
ARE BOTHERED
BY LIGHT AT WORK

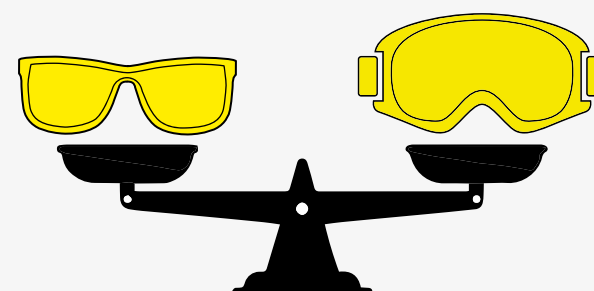


**250
BILLION€**

**COST OF PRODUCTIVITY
LOSS DUE TO BAD VISION**

625 BILLION€

**THE INDIRECT COSTS OF VISION
IMPAIRMENT REPRESENT**



90%

**OF EYE INJURIES CAN BE
PREVENTED WITH PROPER
PROTECTION AND CARE**

1000€
NET/EMPLOYEE
ANNUAL COST SAVINGS
TO THE COMPANY
IN THE US

FOR 5%

**PRODUCTIVITY
IMPROVEMENT DUE TO
VISION CORRECTION.**

MARKINGS AND STANDARDS

Bollé Safety lens and frame marking is specific to each product. Each marking corresponds to a very specific use. Certified and tested by independent laboratories, this information guarantees protective eyewear quality and resistance.

■ Frame marking must include the CE symbol and manufacturer identification (logo or brand). If the spectacles refer to the EN standard, the EN standard number is mandatory together with the various use and mechanical strength symbols, in accordance with the tests requested by the manufacturer.



The crown:
the guarantee of Bollé Safety product authenticity and high quality

LEARN MORE ABOUT THE STANDARD

■ EN166: the reference standard

European PPE regulation 2016/425 makes marking CE and the logo of the company on all personal protective equipment compulsory.

The EN166 standard applies to all eye protection and guarantees adequate marking and the quality of the equipment. Its purpose is to guarantee protection from:

- Impacts characterised by varying degrees of severity
 - Optical radiation
 - Molten metal and hot solids
 - Droplets and splashes
 - Dust
 - Gases
 - Short-circuit electric arcs
- Or from any combination of these risks.

Standard EN166 also defines the basic characteristics to which all eye protection must conform with regard to two criteria: the optical quality and the minimum strength. While all eye protection must be EN166 certified, all filters and equipment are also covered by specific standards which must be understood in order to ensure protective equipment is adapted to the activity of its wearer.

■ EN170: Ultraviolet radiation

European standard EN170 specifies the scale numbers and requirements relative to the transmission factor of filters protecting against ultraviolet radiation/sources of artificial light. The protection filters specified in this standard are not suitable for looking directly at bright light sources such as high-pressure xenon arc lamps or looking directly or indirectly at electric welding arcs.

■ EN172: Industrial use solar filters

EN172 defines the scales and requirements of the corresponding transmission factor for solar filters for industrial use/natural light sources.

MATERIALS

POLYCARBONATE

The main feature of polycarbonate is its **high impact resistance**. An anti-scratch coating is applied automatically to make the material more scratch resistant. Polycarbonate has the added advantage of absorbing all A and B ultraviolet rays from 280 nm up to 380 nm (99.99%).

CR39

This is an organic resin material which is stronger than mineral glass and **50% lighter** and which absorbs a proportion of ultra-violet rays (UVB). Its clearness guarantees perfect optical quality. Its surface scratches more easily than mineral lenses. To remedy this, an anti-scratch coating is applied to the lens.

TRIVEX®

Trivex® has the advantages of polycarbonate and of CR39. Trivex is tougher than CR39 and withstands chemicals and solvents very well, which is not the case for polycarbonate. It is also one **of the lightest materials on the market** with its density of 1.11g/cm³, providing perfect optical vision and filtering 100% of UVAs and UVBs.

	PC	CR39	Trivex
GENERAL			
EN166 Marking	F	S	F
Lightweight	1.2g/cm³ ★★★	1.3g/cm³ ★★★	1.11g/cm³ ★★★★
Optical Quality	★★★	★★☆	★★★★
STRENGTH			
Scratch resistance (toughened HC coating)	★★★	★★★	★★★
Shock resistance	★★★	★★★	★★★★
PROTECTION FROM RISKS			
Chemical risk	★★☆	★★★	★★★★
UV risk (UV cut-off)	385 nm 100% UVA & UVB	350 nm UVB	395 nm 100% UVA & UVB

COATINGS



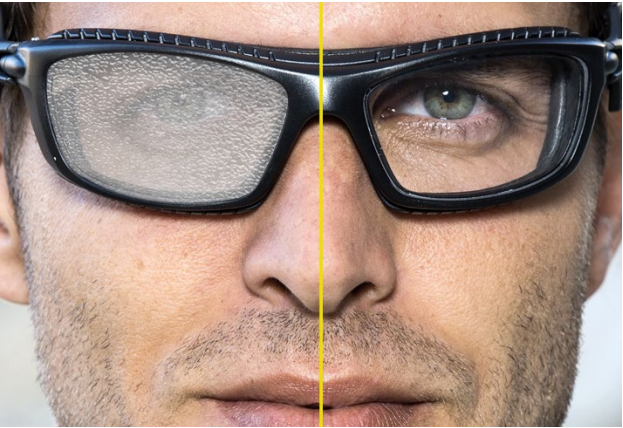
ANTI-SCRATCH

ALL OUR LENSES ARE SHIPPED WITH ANTI-SCRATCH COATING AS STANDARD.
Scratches are one of the repetitive problems that have a major impact on visibility and which can shorten product service life. An anti-scratch coating is applied on the surface of the lens thereby making it more scratch resistant.



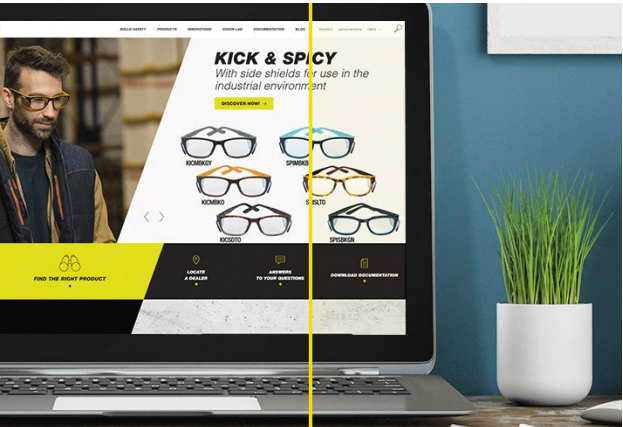
ANTI-GLARE

ANTI-GLARE COATING, WATER REPELLENT, ANTI-STATIC AND REINFORCED ANTI-SCRATCH.
Lenses without anti-glare coating result in a reduction of light transmission of 10 to 15%, thereby penalising visual quality. Anti-glare coated lenses are perfectly transparent and transmit 99% of light. The anti-glare coating improves clearness and contrast giving a more precise image. Anti-glare coating also strengthens scratch resistance. Combined with an anti-static coating, it prevents dust from sticking to the lens and also has a water-repellent property to prevent water from staying on the lens.



PLATINUM®

ANTI-FOG AND ANTI-SCRATCH COATING.
Contrary to other anti-fog coatings, the Platinum® coating gives permanent fog resistance on both sides and limits the condensation effect. It maintains its properties even after repeated cleaning. This exclusive Bollé Safety coating complies with the EN166 standard with the K&N marking.



B-ZEN

ANTI-GLARE COATING AGAINST BLUE LIGHT, ANTI-STATIC WATER REPELLENT AND REINFORCED ANTI-SCRATCH.
The B-Zen coating was designed for people exposed to blue light through LED lighting and screens. This anti-glare, water repellent, anti-static, anti-scratch coating filters about 20% of undesirable blue light. It is very scratch resistant and easy to clean. B-Zen's anti-static properties also improve clarity and reduce dust deposits on the lens surface, making it easier to clean.

TINTS AND FILTER

TINT


The tint protects from dazzle by reducing light intensity. It is available in different shades of brown or grey. Thanks to the UV filter, lenses provide total protection from UVs applicable to all tints.

The tints have an anti-scratch coating and comply with the EN172 standard.

 **DARK BROWN LENS**
Solar tint for extreme conditions

 **MEDIUM BROWN LENS**
Solar tint

 **MEDIUM GREY LENS**
Solar tint

 **DARK GREY LENS**
Solar tint for extreme conditions

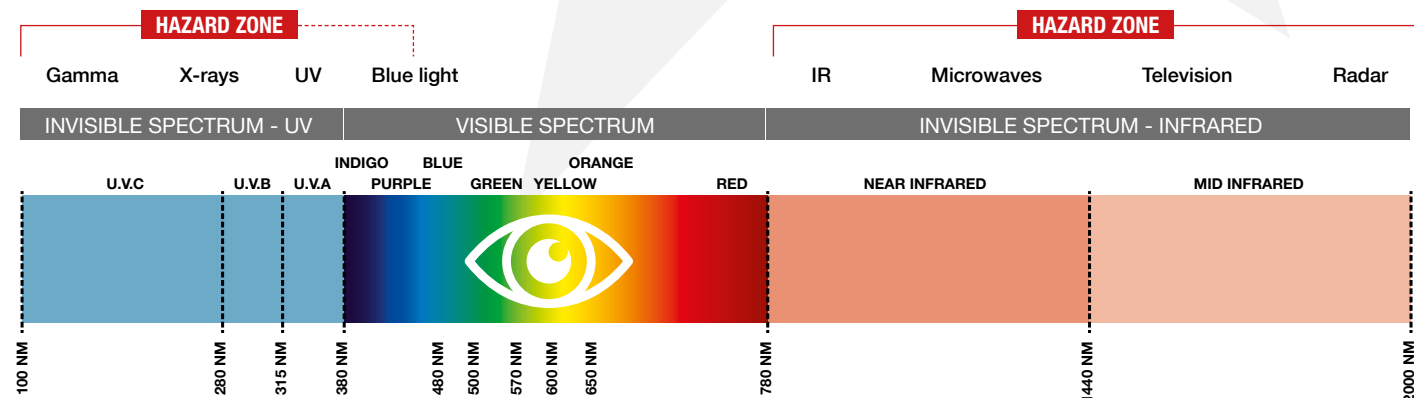
MODULATOR

Photochromic lenses change colour depending on the level of ultra-violets (UVs). The lens becomes lighter or darker automatically (variable comfort tint: brown or grey) depending on surrounding light levels in order to optimise users' sight and protection throughout the day. Photochromic lenses provide optimum eye protection. Modulator has an anti-scratch coating and complies with the EN172 standard.

UV400

Contrary to polycarbonate, CR39 glass does not filter all UVs. This is why the UV400 coating can be added when ordering for total ultra-violet filtering. UV400 complies with the EN172 standard.

BAD OR MISSING PROTECTION CAN CAUSE LESIONS TO THE CORNEA OR THE RETINA/OR PREMATURE CRYSTALLIN AGEING.



NEW COLLECTION

P. 13 - KLASSEE

BECAUSE WE ARE THE EYE PROTECTION SPECIALISTS

We always go the extra mile to propose new products for specific uses or environments.

This year, our EXCELLENCE product line has new KLASSEE, KURT, B809 & B10 frames but also new technology, in particular BLUE BLOCKER.

P. 14 - KURT

P. 15 - B810

P. 15 - B809

THE BLUE BLOCKER LINE

OUR EXCELLENCE FRAMES

Depending on your protection requirements and your morphology we propose frames of which the curve varies from 4 to 8.

4

SLIGHTLY CURVED
Recommended for
all prescription spectacles

6

CURVED
Adapted to 85% of
prescription spectacles

8

VERY CURVED
Adapted to 70% of
prescription spectacles

The frame selection may vary from one country to the next, please contact your salesperson for more information.

	MODELS	PAGES	CURVE	REFERENCES	SIZE	ADJUSTABLE TEMPLES
NEW PRODUCTS	KLASSEE	P 13	4	PXFKLAS401R	55/16	-
	KURT	P 14	4	PXFKURT206R	57/16	+
	B810	P 15	4	PXFB8102042	52/17	+
				PXFB810204R	54/17	+
	B809	P 15	4	PXFB8091022	52/17	+
				B809BL	54/17	+
				B809BXL	57/17	+
ESSENTIALS	B808 II	P 16	4	B808BS	49/18	-
				B808BL	54/17	-
				B808RS	49/18	-
				B808RL	54/17	-
	KICK	P 17	4	KICMBKO	54/19	+
				KICSDTO	54/19	+
				KICMBKGY	54/19	+
	SPICY	P 18	4	SPISLTO	53/19	+
				SPISBKGN	53/19	+
				SPIMBKB	53/19	+
	B807	P 19	6	B807N	57/17	-
	B805	P 19	4	B805	54/18	-
	B806	P 20	4	B806S	52/17	+
				B806L	54/17	+
COVERING	XTRA	P 21	6	XTRABKL	58/12	-
	MACRO	P 21	6	MACN	54/18	-
HYBRIDS	BAXTER RX	P 22	8	BAXN	63/18	-
				BAXWFSN	63/18	-
WRAPAROUND	TRACKER RX	P 23	6	TRACKERRX	74/20	-
	TRYON RX	P 24	8	TRYON	61/18	-
	HARPER	P 25	8	HARPGN	62/16	+
				HARPNB	62/16	+
	HUSTLER RX	P 26	8	HUSTN	68/16	-
METAL	B713	P 27	4	B713S	52/17	+
				B713L	54/17	+
	B711	P 28	4	B711	48/21	-
	B712	P 28	4	B712S	52/14	+
				B712L	54/14	+
	B708	P 28	4	B708S	52/18	+
				B708L	54/18	+
OFFICE SPECIALS	KICK OFFICE	P 29	4	OFKICMBKGY	54/19	+
	SPICY OFFICE	P 29	4	OFSPISLTO	53/19	+

NEW PRODUCTS

KLASSEE

Safety and comfort

+ Bio-sourced materials

+ Light and flexible for maximum comfort

+ Side, top and bottom protections

20 g

CURVE 4

+ BI-MATERIAL FRAME TR90/GRIFLEX

+ LARGE TEMPLES FOR AN IMPROVED PROTECTION



MODEL	FRAME	VERSIONS	REFERENCES	SIZE	FRAME MARKING	TEMPLE LENGTH
NEW KLASSEE	Navy blue	-	PXFKLAS401R	55/16	EN166 F C€	131 mm

KURT

Sporty and Robust

- + Sporty design for total protection
- + Lightly smoked translucent side fo maximum clarity, without glare
- + Wide frame

CURVE 4



26 g

+ PC/TRNZZ FRAME FOR INCREASED COMFORT

+ ADJUSTABLE TEMPLES



MODEL	FRAME	VERSIONS	REFERENCES	SIZE	FRAME MARKING	TEMPLE LENGTH
NEW KURT	■ Grey/Yellow	-	PXFKURT206R	57/16	☞ EN166 F C ☞	125 mm

B810

Pure protection

- + Perfect oval shape for strong corrections
- + Translucent grey frame for maximum clarity
- + Adjustable temples

CURVE 4



S: 24 g
L: 24 g



MODEL	FRAME	VERSIONS	REFERENCES	SIZE	FRAME MARKING	TEMPLE LENGTH
NEW B810	■ Translucent grey and black	SMALL	PXFB8102042	52/17	☞ EN166 F C ☞	133 mm
	■ Translucent grey and black	LARGE	PXFB810204R	54/17	☞ EN166 F C ☞	133 mm

B809

Discrete protection

- + Discrete thanks to its clear frame
- + Available in 3 sizes
- + Adjustable thin temples

CURVE 4



+ SLIGHTLY SHADED SHIELDS

+ FIXED SHIELDS PROVIDING SIDE, LOWER AND UPPER PROTECTION

S: 25 g
L: 31 g
XL: 33 g



MODEL	FRAME	VERSIONS	REFERENCES	SIZE	FRAME MARKING	TEMPLE LENGTH
NEW B809	■ Black temples	SMALL	PXFB8091022	52/17	☞ EN166 F C ☞	130 mm
	■ Black temples	LARGE	B809BL	54/17	☞ EN166 F C ☞	127 mm
	■ Black temples	EXTRA LARGE	B809BXL	57/17	☞ EN166 F C ☞	130 mm

B808 II

Style and universality

- + Polycarbonate bridge for perfect support
- + TIPGRIP comfort non-slip temples
- + Available in two sizes and colours

Technology

POLARIZED

Available in the non prescription safety spectacles range

S: 20 g
L: 20 g

CURVE 4



KICK

Effective, modern and coloured

- + A choice of 3 colours
- + Modern and urban style
- + Available in a version without side shields (for office use)

17 g

CURVE 4



+ WRAPAROUND FRAME PROVIDING SIDE, LOWER AND UPPER PROTECTION



MODEL	FRAME	VERSIONS	REFERENCES	SIZE	FRAME MARKING	TEMPLE LENGTH
B808 II	Gunmetal	SMALL	B808BS	49/18	EN166 F C €	130 mm
	Gunmetal	LARGE	B808BL	54/17	EN166 F C €	135 mm
	Red	SMALL	B808RS	49/18	EN166 F C €	130 mm
	Red	LARGE	B808RL	54/17	EN166 F C €	135 mm

+ BUILT-IN SIDE SHIELDS FOR LATERAL PROTECTION



+ LIGHTWEIGHT FRAME

+ NON-SLIP BRIDGE INSERT



MODEL	FRAME	VERSIONS	REFERENCES	SIZE	FRAME MARKING	TEMPLE LENGTH
KICK	Black/Orange	-	KICMBKO	54/19	EN166 F C €	140 mm
	Dark tortoise	-	KICSDTO	54/19	EN166 F C €	140 mm
	Black/Grey	-	KICMBKGY	54/19	EN166 F C €	140 mm

SPICY

Effective, modern and coloured

- + A choice of 3 colours
- + Modern and urban style
- + Available in a version without side shields (for office use)

18 g

CURVE 4



+ BUILT-IN SIDE SHIELDS FOR LATERAL PROTECTION

+ LIGHTWEIGHT FRAME

+ NON-SLIP BRIDGE INSERT



MODEL	FRAME	VERSIONS	REFERENCES	SIZE	FRAME MARKING	TEMPLE LENGTH
SPICY	Light brown tortoise	-	SPISLTO	53/19	EN166 F C E	138 mm
	Black/green	-	SPISBKGN	53/19	EN166 F C E	138 mm
	Black/blue	-	SPIMBKB	53/19	EN166 F C E	138 mm

B807

Simplicity and optimum protection

- + Wraparound frame for maximum protection
- + Non-slip bridge
- + Side shields

24 g

CURVE 6



MODEL	FRAME	VERSIONS	REFERENCES	SIZE	FRAME MARKING	TEMPLE LENGTH
B807	Translucent grey/Black	-	B807N	57/17	EN166 F C E	120 mm

B805

Clear protection

- + Fully translucent frame
- + TIPGRIP comfort non-slip temples
- + Built-in shields providing side, lower and upper protection

23 g

CURVE 4



MODEL	FRAME	VERSIONS	REFERENCES	SIZE	FRAME MARKING	TEMPLE LENGTH
B805	Clear	-	B805	54/18	EN166 F C E	140 mm

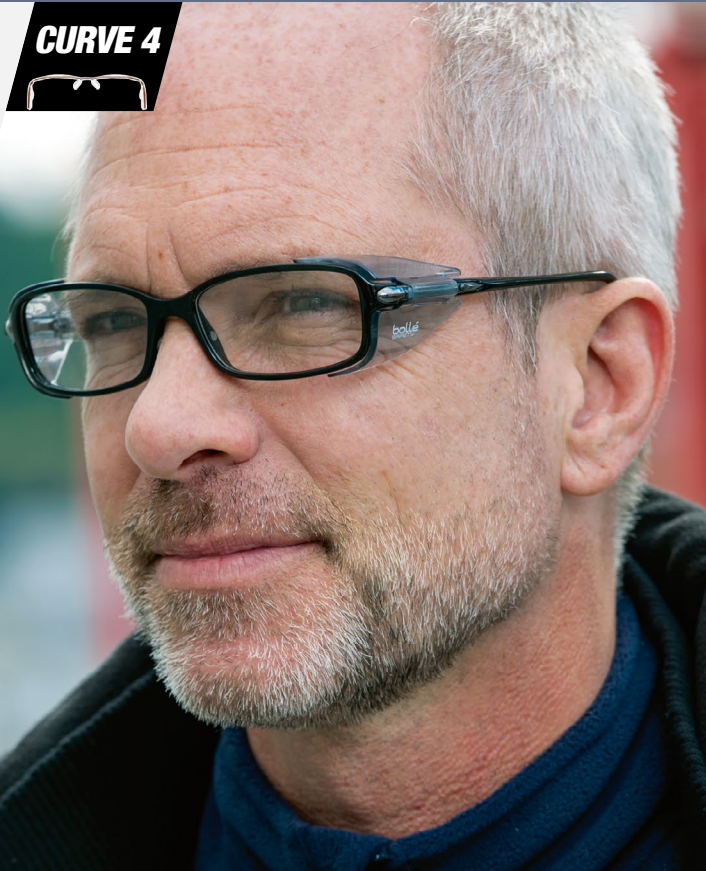
B806

CURVE 4

Finesse at the service of safety

- + Very fashionable rectangular shape
- + Adjustable thin temples
- + Available in two sizes

S: 20 g
L: 22 g



+ FIXED SHIELDS PROVIDING SIDE, LOWER AND UPPER PROTECTION

+ TINTED SHIELDS

+ LIGHTWEIGHT AND THIN FRAME

+ BRIDGE WITH NON-SLIP INSERTS



MODEL	FRAME	VERSIONS	REFERENCES	SIZE	FRAME MARKING	TEMPLE LENGTH
B806	Black temples	SMALL	B806S	52/17	EN166 F C €	140 mm
	Black temples	LARGE	B806L	54/17	EN166 F C €	140 mm

XTRA

CURVE 6

Large, universal model

- + Wide field of vision
- + Built-in shields providing side, lower and upper protection



Asian Fit

24 g



+ PIVOTING TEMPLES TO ADJUST PROTECTION



MODEL	FRAME	VERSIONS	REFERENCES	SIZE	FRAME MARKING	TEMPLE LENGTH
XTRA	Black/Translucent	-	XTRABKL	58/12	EN166 F C €	120 mm

MACRO

CURVE 6

Style and protection

- + Lightweight, ultra covering frame for maximum protection
- + Pivoting temples to adjust protection
- + Rounded shape

19 g



+ FLEXIBLE TEMPLES



MODEL	FRAME	VERSIONS	REFERENCES	SIZE	FRAME MARKING	TEMPLE LENGTH
MACRO	Clear grey blue	-	MACN	54/18	EN166 F C €	140 mm

BAXTER RX

Maximum protection and sealing

- + Increased protection
- + Ultra wraparound frame
- + Sealed foam and retainer strap for maximum protection from particles (depending on the version)

Available in the non prescription safety spectacles range

39 g

CURVE 8



+ STRAP WITH INGENUOUS ATTACHMENT SYSTEM



MODEL	FRAME	VERSIONS	REFERENCES	SIZE	FRAME MARKING	TEMPLE LENGTH
BAXTER RX Spectacle version	■ Blue/Black	Worn as spectacles	BAXN	63/18	EN166 F C €	122 mm
BAXTER RX Strap version	■ Blue/Black	Worn with foam + strap	-	-	EN166 3 4 5 F C €	-
NEW BAXTER RX Without foam or strap	■ Blue/Black	Spectacles only	BAXWFSN	63/18	EN166 F C €	122 mm
Accessory	-	Foam + strap only kit	BAXKITFS	-	EN166 3 4 5 F C €	-

TRACKER RX

Prescription version of the TRACKER model

- + Supplied with an RX insert
- + Foam with indirect vented and retainer strap for better protection

Available in the non prescription safety spectacles range

52 g

CURVE 6



+ WRAPAROUND FRAME

+ INCREASED PROTECTION



+ ADJUSTABLE STRAP

MODEL	FRAME	VERSIONS	REFERENCES	SIZE	FRAME MARKING	TEMPLE LENGTH
TRACKER RX Spectacle version	■ Gunmetal/Black	Worn as spectacles	TRACKERRX	74/20 (Spectacles) 45/28 (Insert)	EN 166 FT C €	117 mm
TRACKER RX Strap version	■ Gunmetal/Black	-Worn with strap	TRACKERRX	74/20 (Spectacles) 45/28 (Insert)	EN 166 3 4 BT C €	117 mm
Accessory	Supplied with	Optical insert	SOSTRACKER	-	-	-

TRYON RX

Sporty design and absolute protection

- + Ultra wraparound frame for maximum protection
- + **FLEX**: ultra-modular, shape-memory bridge to adapt to all faces
- + **FLEX 160°** to adapt to all heads and reduce pressure points

Available in the non prescription safety spectacles range

16 g

CURVE 8



HARPER

Ultra wraparound and coloured

- + Ultra wraparound frame for maximum protection
- + Comfortable, bi-material coloured adjustable temples
- + Adjustable non-slip bridge

19 g

CURVE 8



+ **OPTIONAL STRAP FOR MORE SUPPORT**



MODEL	FRAME	VERSIONS	REFERENCES	SIZE	FRAME MARKING	TEMPLE LENGTH
TRYON RX	Blue/Black	-	TRYON	61/18	EN 166 F C €	117 mm
Accessory	Optional	Retainer strap	RUSHKITS	-	-	-

+ **WIDE FIELD OF VISION**



MODEL	FRAME	VERSIONS	REFERENCES	SIZE	FRAME MARKING	TEMPLE LENGTH
HARPER	Green/grey temples	-	HARPGN	62/16	EN166 F C €	115 mm
	Blue/grey temples	-	HARPCN	62/16	EN166 F C €	115 mm

HUSTLER RX

CURVE 8



Sporting and ultra-protective

- + Ultra Wraparound frame for maximum protection
- + Sporty and modern design
- + Non-slip bridge

Available in the non prescription
safety spectacles range

19 g



+ STRAIGHT AND FLEXIBLE TEMPLES

+ TIPGRIP NON-SLIP TEMPLES

+ SIDE SHIELDS



MODEL	FRAME	VERSIONS	REFERENCES	SIZE	FRAME MARKING	TEMPLE LENGTH
HUSTLER RX	■ Black	-	HUSTN	68/16	EN 166 F C €	120 mm

B713

CURVE 4



Elegance and protection

- + Adjustable temples
- + Very trendy design
- + Fixed shields providing side, lower and upper protection

S: 27 g
L: 30 g



+ STYLISH METAL FRONT

+ ADJUSTABLE NOSE PADS



MODEL	FRAME	VERSIONS	REFERENCES	SIZE	FRAME MARKING	TEMPLE LENGTH
B713	■ Black/Stainless steel	SMALL	B713S	52/17	EN166 F C €	135 mm
	■ Black/Stainless steel	LARGE	B713L	54/17	EN166 F C €	135 mm

B711

CURVE 4

Frame adapted to panoramic face masks

- + Frame without shields
- + Spectacles for all-round vision goggles
- + Ultra thin hook temples



18 g



MODEL	FRAME	VERSIONS	REFERENCES	SIZE	FRAME MARKING	TEMPLE LENGTH
B711	Metal	-	B711	48/21	C €	147 mm

B712

CURVE 4

Strength and simplicity

- + Adjustable temples and nose pads
- + Timeless style
- + Fixed shields providing side, lower and upper protection



S: 31 g
L: 35 g

+ ADJUSTABLE TEMPLES AND NOSE PADS



+ TINTED SHIELDS

MODEL	FRAME	VERSIONS	REFERENCES	SIZE	FRAME MARKING	TEMPLE LENGTH
B712	Metal	SMALL	B712S	52/14	EN166 F C €	140 mm
	Metal	LARGE	B712L	54/14	EN166 F C €	140 mm

B708

CURVE 4

The must have aviator frame at the service of safety

- + Aviator style with double bridge
- + Adjustable temples and nose pads
- + Riveted shields for side, top and bottom protection



S: 21 g
L: 24 g

+ ADJUSTABLE TEMPLES AND NOSE PADS



MODEL	FRAME	VERSIONS	REFERENCES	SIZE	FRAME MARKING	TEMPLE LENGTH
B708	Bronze	SMALL	B708S	52/18	EN166 F C €	140 mm
	Bronze	LARGE	B708L	54/18	EN166 F C €	140 mm

KICK OFFICE

CURVE 4

Modern and effective

- + Modern trendy style
- + Without side shields
- + Supplied with the **ZEN** anti-glare blue light coating

Technology

ZEN



15 g



MODEL	FRAME	VERSIONS	REFERENCES	SIZE	FRAME MARKING	TEMPLE LENGTH
KICK OFFICE	Black/Grey	-	OFKICMBKGY	54/19	EN166 S C €	140 mm

SPICY OFFICE

CURVE 4

Modern and effective

- + Modern trendy style
- + Without side shields
- + Supplied with the **ZEN** anti-glare blue light coating

Technology

ZEN



18 g



MODEL	FRAME	VERSIONS	REFERENCES	SIZE	FRAME MARKING	TEMPLE LENGTH
SPICY OFFICE	Light brown tortoise	-	OFSPISLTO	53/19	EN166 S C €	138 mm

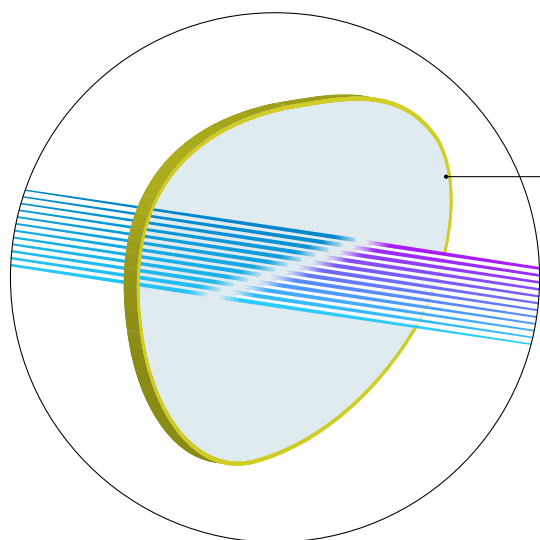
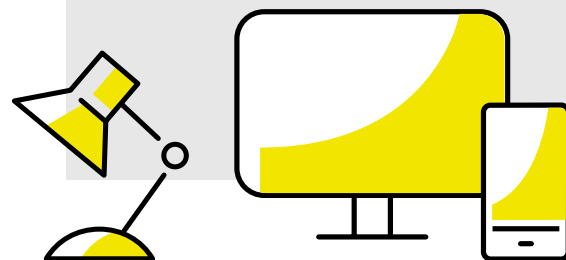
BLUE LIGHT

Light is composed of a multitude of electromagnetic particles of different wavelengths.

Long waves have less energy and give yellow and orange colours. Shorter waves therefore have more energy and give variations of blue and purple colours. Therefore, blue light is naturally present in daylight and is charged with energy (nm).
The eye only sees light of which the wavelength is between 380 nm (purple) and 780 nm (red).
So-called blue light is between 380 nm and 460 nm.

The sun is not the only source of blue light. In fact, the LEDs used for lighting and all types of screen also produce blue light. In itself, natural blue light is not dangerous, but artificial blue light can be harmful. As artificial blue light has a higher energy charge, it is also more harmful when people are exposed to it for long periods. Now, LEDs are used for lighting in 45% of cases, and on average people spend over 8 hours per day in front of a screen, thereby increasing the likelihood of health issues resulting from over-exposure to blue light.
Stress, fatigue, diabetes, disrupted sleep cycles, an over-exposure to blue light can have an impact on people's everyday life, regardless of whether they have eyesight problems. It is therefore very important to protect the eyes during extended exposure to artificial blue light by using equipment that blocks harmful blue light.

The main sources of harmful blue light are screens and LED lighting.



The B-Zen anti-blue light (available on the prescription range) or **Blue Blocker** coatings have been developed to block light that is too charged in energy which can accelerate eye ageing.

The coated lens filters 35% of blue light, only allowing light that has a sufficiently high wavelength to guarantee the health of your eyesight.

THE BLUE BLOCKER LINE



Blue Blocker technology provides protection from harmful blue light every day. Blue Blocker is available on a wide range of frames adapted to your style and your professional needs.



B713

Without side shields
Ref. PXFB713207
Size L: 54/17 – 135 mm



B806

Without side shields
Ref. PXFB806108
Size L: 54/17 – 140 mm



B809

Ref. PXFB809108
Size L: 54/17 – 127 mm



HARPER

Blue
Ref. PXFHARP208
Size: 62/16 – 115 mm



KICK

Black Grey
Ref. PXFKICK109
Size: 54/19 – 140 mm



KICK OFFICE

Without side shields
Black Grey
Ref. PXFOFKI109
Size: 54/19 – 140 mm



SPICY OFFICE

Light tortoiseshell
Ref. PXFOFSP605
Size: 53/19 – 138 mm

WHY CHOOSE BOLLÉ SAFETY TO PROTECT AND CORRECT YOUR EMPLOYEES' EYESIGHT?

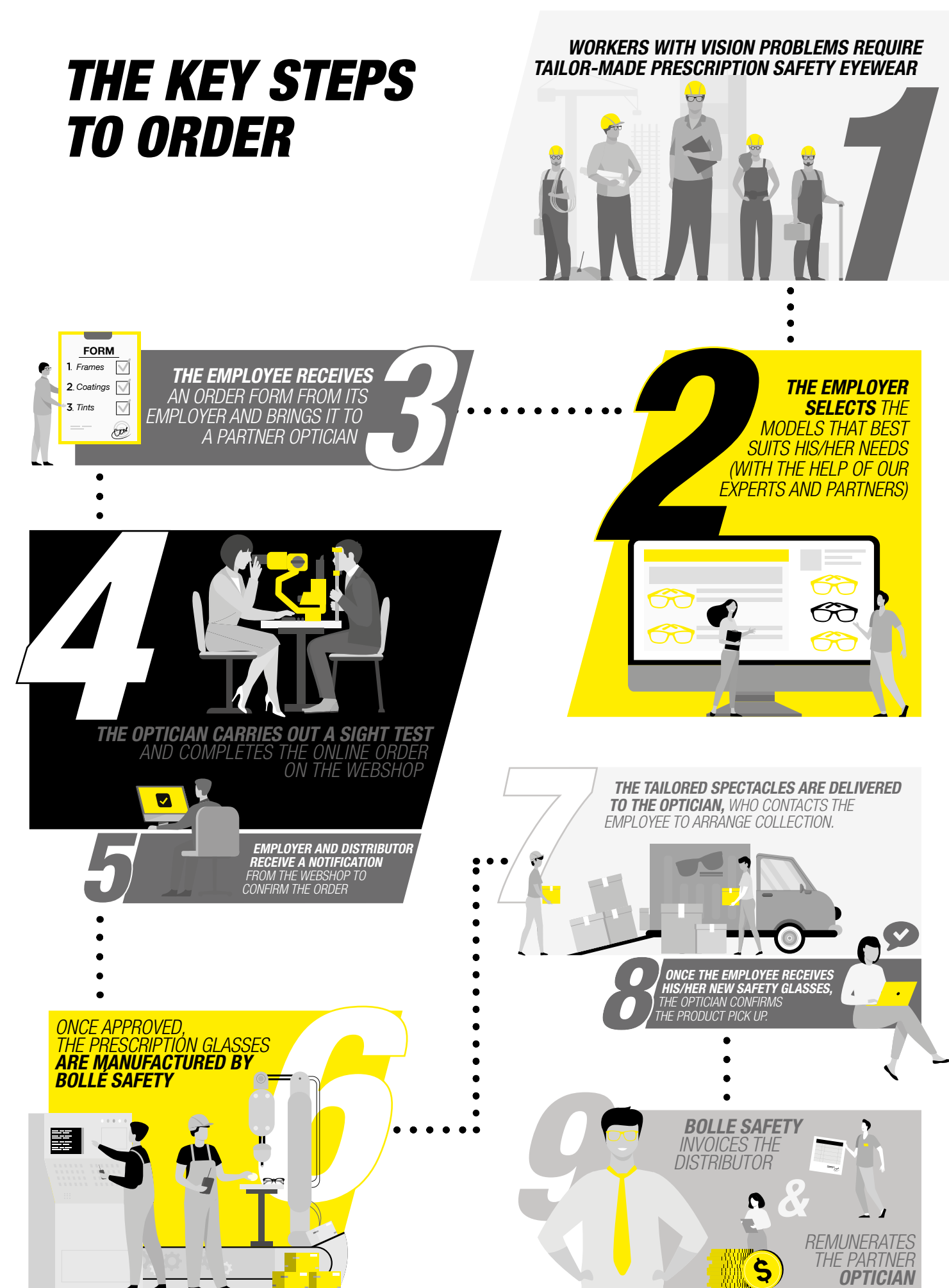
Well protected eyes and properly corrected eyesight lowers the risks of accidents and reduces financial costs.

Thousand of businesses are already working with us, why not yours?

- Bad eyesight generates the risk of accidents and lowers productivity. **Our wide range of solutions meet 98% of prescription needs.**
- The Excellence correction programme is a simple, **turnkey offer available to all** to combine protection and correction for every employee.
- **We support you to recommend** the best solutions and our secure ordering website allows for reliable and simple real-time management.
- We guarantee **optimum lens quality** and personal service with **a network of local partner opticians.**



THE KEY STEPS TO ORDER



IN THE BLINK OF AN EYE

Find the models available for outdoor or mixed indoor/outdoor use, specific welding models and safety goggles.

NEW PRODUCTS



4 **KLASSEE** P13
Size: 55/16 - 131 mm
■ Ref. PXFKLAS401R



4 **KURT** P14
Size: 57/16 - 125 mm
■ Ref. PXFKURT206R



4 **B810** P15
With side shields
Size: S 52/17 - L 54/17 - 133 mm
■ Ref. PXFB8102042
■ Ref. PXFB810204R



4 **B809** P15
Without side shields
Size: S 52/17 - 130 mm
L 54/17 - 127 mm - XL 57/17 - 130 mm
■ Ref. PXFB8091022
■ Ref. B809BL
■ Ref. B809BXL

ESSENTIALS



4 **B808 II** P16
Size: S 49/18 - 130 mm
L 54/17 - 135 mm
■ Ref. B808BS
■ Ref. B808BL
■ Ref. B808RS
■ Ref. B808RL



4 **KICK** P17
With side shields
Size: 54/19 - 140 mm
■ Ref. KICMBKO
■ Ref. KICSDTO
■ Ref. KICMBKGY



4 **SPICY** P18
With side shields
Size: 53/19 - 138 mm
■ Ref. SPISLTO
■ Ref. SPISBKGN
■ Ref. SPIMBKB



6 **B807** P19
Size: 57/17 - 120 mm
■ Ref. B807N



4 **B805** P19
Size: 54/18 - 140 mm
□ Ref. B805



4 **B806** P20
With side shields
Size: S 52/17 - L 54/17 - 140 mm
■ Ref. B806S
■ Ref. B806L

bolle SAFETY 34

COVERING



6 **XTRA** P21
Size: 58/12 - 120 mm
■ Ref. XTRABKL



6 **MACRO** P21
Size: 54/18 - 140 mm
■ Ref. MACN



8 **BAXTER RX** P22
Size: 63/18 - 122 mm
■ Ref. BAXN
■ Ref. BAXKITFS
■ Ref. BAXWFSN



6 **TRACKER RX** P23
Size: 74/20 (spectacles)
- 45/28 (insert) - 117 mm
■ Ref. TRACKERRX

WRAPAROUND



8 **TRYON RX** P24
Size: 61/18 - 117 mm
■ Ref. TRYON



8 **HARPER** P25
Size: 62/16 - 115 mm
■ Ref. HARPGN
■ Ref. HARPBN



8 **HUSTLER RX** P26
Size: 68/16 - 120 mm
■ Ref. HUSTN

METAL



4 **B713** P27
With side shields
Size: S 52/17 - L 54/17 - 135 mm
■ Ref. B713S
■ Ref. B713L



4 **B711** P28
Without side shields
Size: 48/21 - 147 mm
■ Ref. B711



4 **B712** P28
With side shields
Size: S 52/14 - L 54/14 - 140 mm
■ Ref. B712S
■ Ref. B712L



4 **B708** P28
With side shields
Size: S 52/18 - L 54/18 - 140 mm
■ Ref. B708S
■ Ref. B708L

OFFICE SPECIALS



4 **KICK OFFICE** P29
Without side shields
Size: 54/19 - 140 mm
■ Ref. OFKICMBKGY



4 **SPICY OFFICE** P29
Without side shields
Size: 53/19 - 138 mm
■ Ref. OFSPISLTO

bolle SAFETY 35



empreinte.com - 400 Lynn Rd - 607 702 2021 Photos: Frédéric BOURGEOIS - Images not contractually binding - Acknowledgements: Navapex, Fortraiel, JG Aviation, Maritime Crane Moulins France (JG), Marine pompier de Marseille. All rights reserved. The text, images and graphics are subject to copyright. The contents of this publication may not be copied, distributed or altered for commercial purposes without the written permission of Bollé Safety.



bolle-safety.com

Europe / Bollé Safety

34, rue de la Soie
 69100 Villeurbanne
 France
 Tel. 00 33 (0)4 78 85 23 64
 Fax: 00 33 (0)4 78 85 28 56
 E-mail: contact@bolle-safety.com

UK & Ireland / Bollé Safety

Unit C83 - Barwell Business Park
 Leatherhead Road - Chessington
 Surrey - KT9 2NY - UK
 Tel. 00 44 (0)208 391 4700
 Fax: 00 44 (0)208 391 4733
 E-mail: rxsafety@bolle-safety.co.uk